



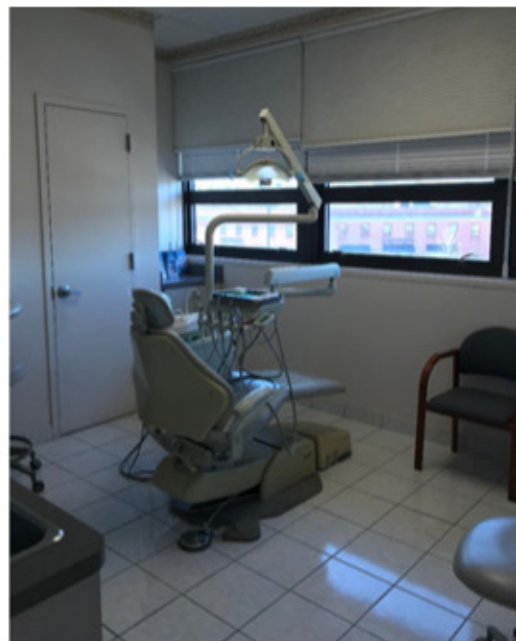
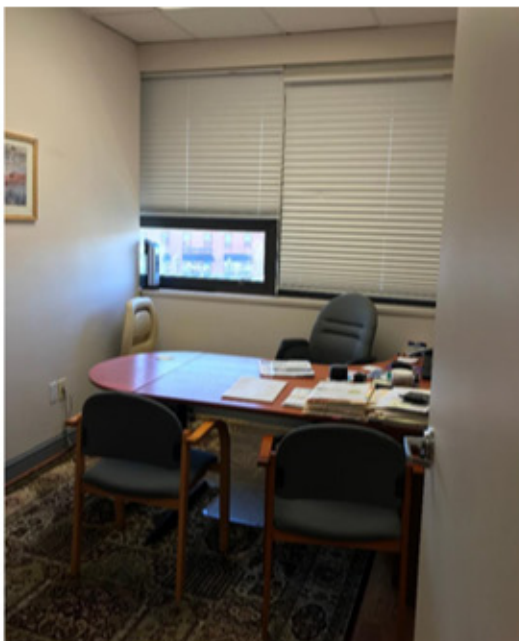
Rye Ridge Shopping Center, Plaza & South

[Click here for pdf file to print](#)



## Professional office space for lease at The Rye Ridge Shopping Center

*Equipment not included*



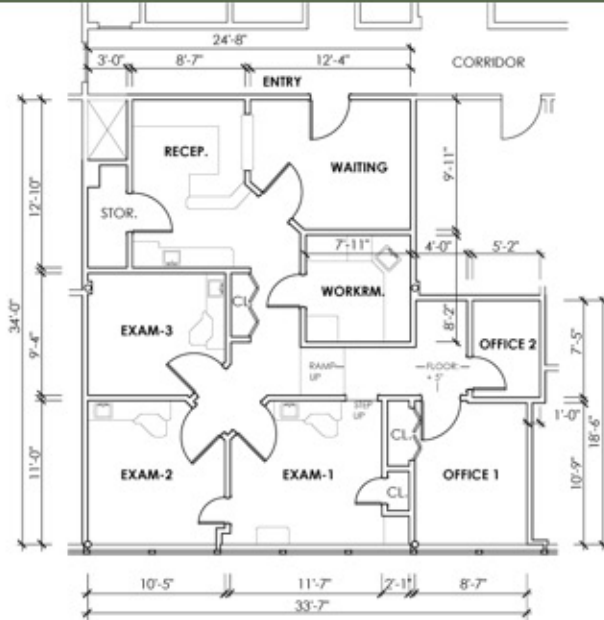




**SITE PLAN**



FIELD/CONDITION CONFIRMATION NOTE:  
THIS PLAN HAS BEEN FIELD MEASURED TO PROVIDE ONLY A BASE PLAN FOR LAYOUTS.  
ALL DIMENSIONS & FIELD CONDITIONS SHALL BE CONFIRMED BY THE TENANT  
DESIGNER PRIOR TO SPACE PLANNING. TENANT DESIGNER SHALL BE RESPONSIBLE FOR  
CONFIRMATION OF ALL DIMENSIONS & FIT OF LAYOUT WITHIN THE SPACE.



**LEASE PLAN: 1,053 GSF**  
SCALE: 1/8" = 1'-0" (8 1/2 X 11)

WIN PROPERTIES, INC. / RYE RIDGE PLAZA  
10 RYE RIDGE PLAZA, SUITE 200  
RYE BROOK, NY 10573

**RYE RIDGE  
SHOPPING CENTER**  
RYE BROOK, NY 10573

**SR 118: SUITE # 5**  
12 / 1 / 17





**LESTER'S**  
CLOTHING • SHOES • ACCESSORIES



**CAVA**

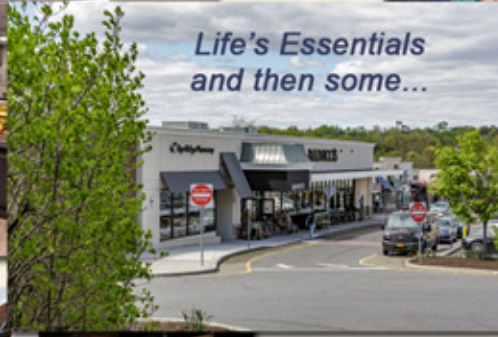
**SOULCYCLE**



**BALDUCCI'S**  
FOOD LOVER'S MARKET



*Life's Essentials  
and then some...*



**CHOP'T**



**For more information please contact Erin Hinchey  
914-468-7300 or ehinchey@winprop.com**

**[ryeridgeshoppingcenter.com](http://ryeridgeshoppingcenter.com)**



**South Ridge Street & Bowman Avenue, Rye Brook, NY**  
**Easy Access to I-287, I-95, Hutchinson & Merritt Parkways**



**Directions**

**Aerial  
Photograph**

